

# S/LBV, S/B and S/BA Hangers

The S/BA is a cost-effective alternative to heavier, special-order hangers. It is value engineered and tested to achieve higher allowable loads and increased performance. It may be fastened with screws or powder-actuated fasteners or welded to the header, providing more design options and greater versatility.

S/LBV and S/B top-flange hangers are manufactured with precision forming and quality control, providing dimensional accuracy and helping to ensure proper bearing area and connection.

**Material:** S/LBV, S/BA – 68mil (14 ga.); S/B – 97mil (12 ga.)

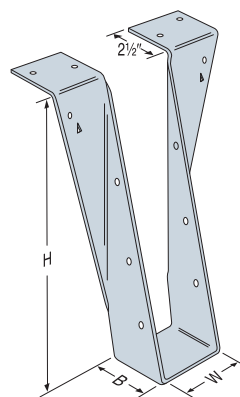
**Finish:** Galvanized (G90)

**Codes:** IAPMO ER-124

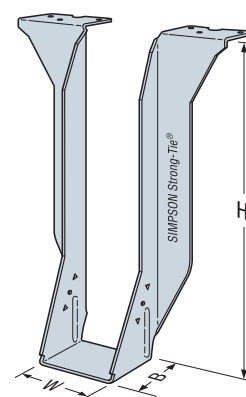
**Load Tables:** Visit [strongtie.com](http://strongtie.com) for the latest load tables and testing information

S/LBV Series Model No.	S/B Series Model No.	W (in.)
S/LBV1.56X	S/B1.56X	1 <sup>9</sup> / <sub>16</sub>
S/LBV1.68X	S/B1.68X	1 <sup>11</sup> / <sub>16</sub>
S/LBV1.81X	S/B1.81X	1 <sup>13</sup> / <sub>16</sub>
S/LBV2.06X	S/B2.06X	2 <sup>1</sup> / <sub>16</sub>
S/LBV2.37X	S/B2.37X	2 <sup>3</sup> / <sub>16</sub>
S/LBV2.56X	S/B2.56X	2 <sup>9</sup> / <sub>16</sub>
S/LBV2.68X	S/B2.68X	2 <sup>11</sup> / <sub>16</sub>
S/LBV3.12X	S/B3.12X	3 <sup>1</sup> / <sub>8</sub>
S/LBV3.56X	S/B3.56X	3 <sup>9</sup> / <sub>16</sub>
S/LBV3.62X	S/B3.62X	3 <sup>5</sup> / <sub>8</sub>
S/LBV4.06X	S/B4.06X	4 <sup>1</sup> / <sub>16</sub>
S/LBV4.12X	S/B4.12X	4 <sup>1</sup> / <sub>8</sub>
S/LBV4.28X	S/B4.28X	4 <sup>1</sup> / <sub>4</sub>
S/LBV4.75X	S/B4.75X	4 <sup>3</sup> / <sub>4</sub>
—	S/B5.25X	5 <sup>1</sup> / <sub>4</sub>
S/LBV5.5X	S/B5.5X	5 <sup>1</sup> / <sub>2</sub>
—	S/B5.56X	5 <sup>9</sup> / <sub>16</sub>
—	S/B6.06X	6 <sup>1</sup> / <sub>16</sub>
—	S/B7.12X	7 <sup>1</sup> / <sub>8</sub>
—	S/B7.25X	7 <sup>1</sup> / <sub>4</sub>
—	S/B7.5X	7 <sup>1</sup> / <sub>2</sub>

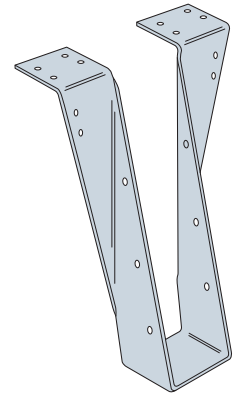
S/BA Series Model No.	W (in.)	H (in.)
S/BA2.12/8	2 <sup>1</sup> / <sub>8</sub>	8
S/BA2.12/10		10
S/BA2.12/12		12
S/BA2.12/14		14
S/BA4.18/8	4 <sup>3</sup> / <sub>16</sub>	8
S/BA4.18/10		10
S/BA4.18/12		12
S/BA4.18/14		14



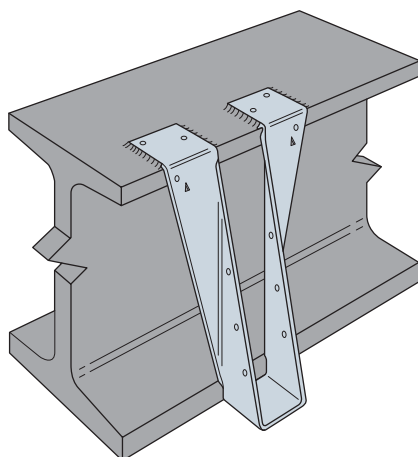
S/LBV



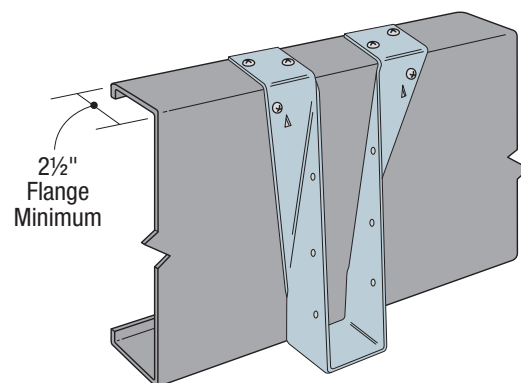
S/BA



S/B



S/LBV, S/B, and S/BA Are  
Acceptable for Weld-On Applications  
(S/LBV shown)



S/LBV Installation with  
a CFS Steel Header